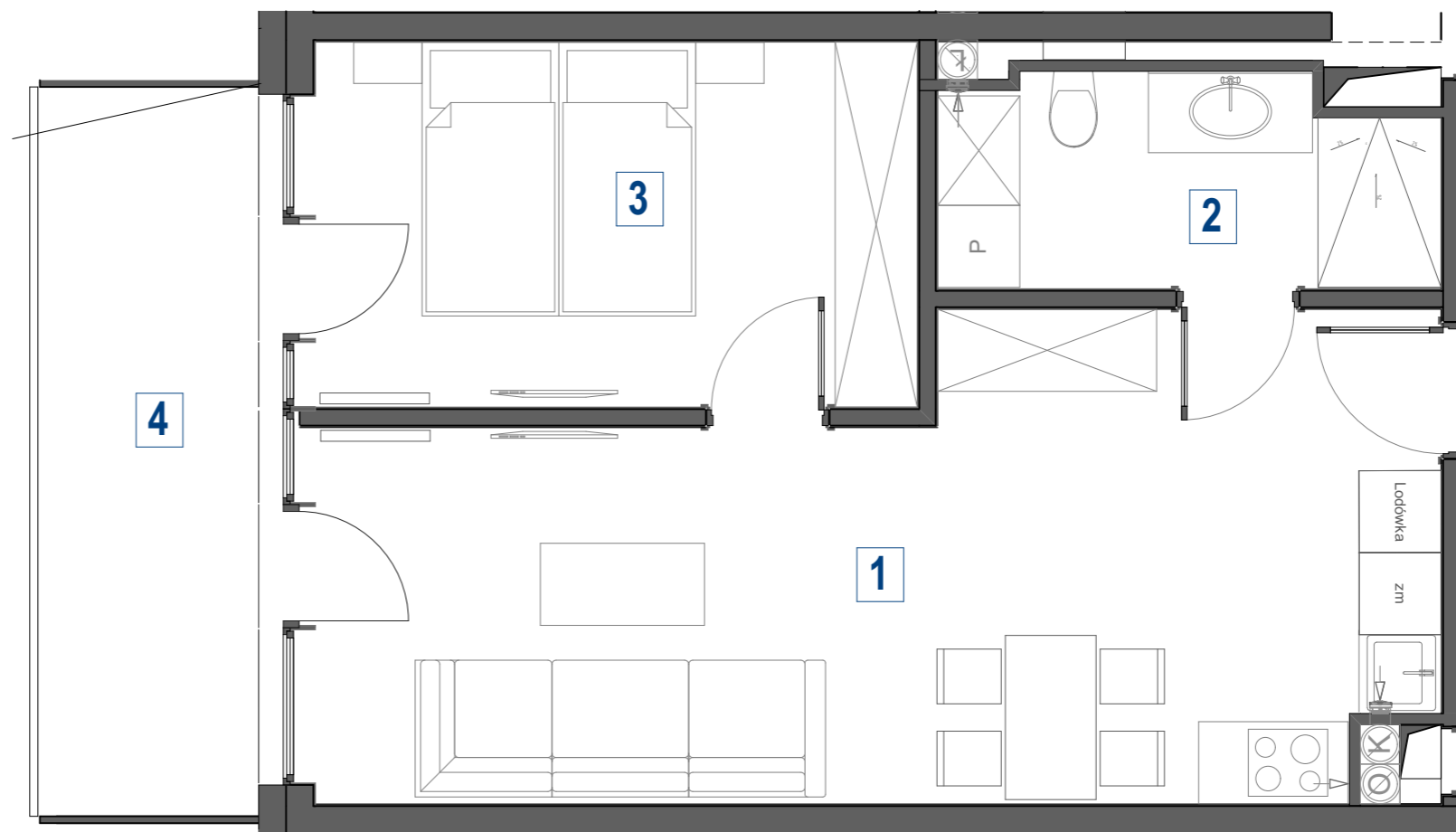
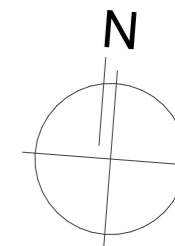
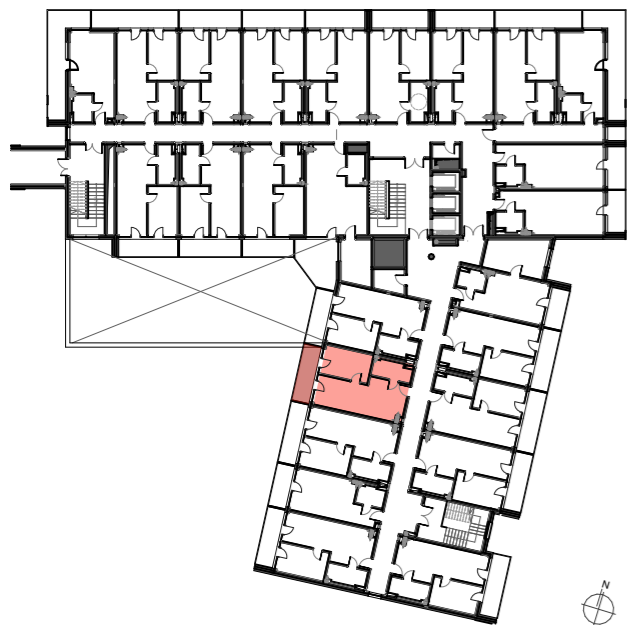


BUDYNEK C

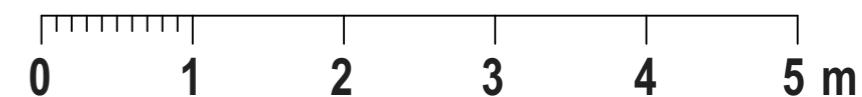
PIĘTRO 1

C.124

42,57 m²



1	salon z aneksem kuchennym	25,4
2	łazienka	5,4
3	pokój	11,7
4	taras	8,6



APARTAMENTY KASPROWICZA * KOŁOBRZEG * UL. KASPROWICZA 20C

www.puh-akces.pl * akces@puh-akces.pl * tel. 693-213-211 * ul. Jagiellońska 22C/14U * 78-100 Kołobrzeg