

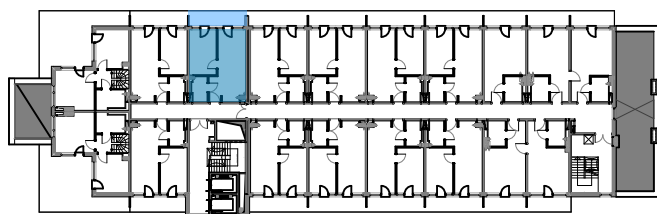
**BUDYNEK B**

**PIĘTRO 6**

**B.603**

**37,3 m<sup>2</sup>**

**\* APARTAMENTY KASPROWICZA \* KOŁOBRZEG \***



1	salon z aneksem kuchennym	21,5 m <sup>2</sup>
2	pokój	12,0 m <sup>2</sup>
3	łazienka	3,8 m <sup>2</sup>

4	taras	8,4 m <sup>2</sup>
---	-------	--------------------

