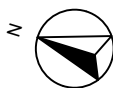
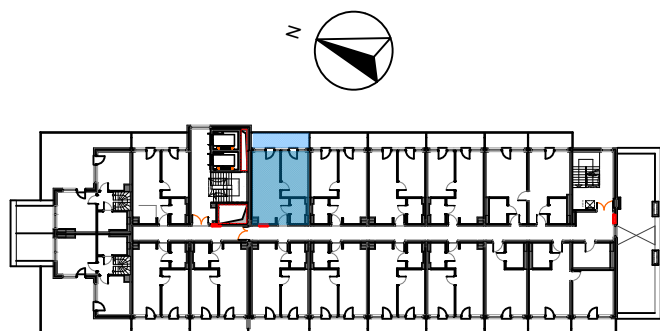


BUDYNEK A
6 PIĘTRO

A.6.10

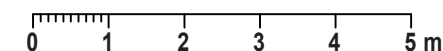
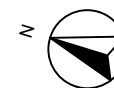
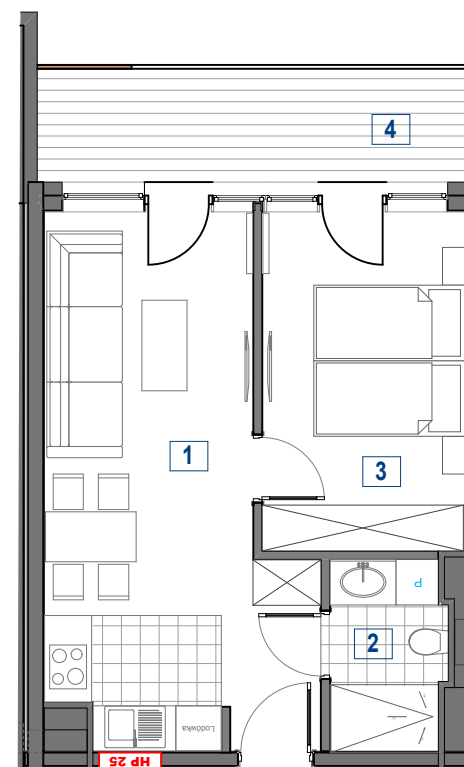
*** APARTAMENTY KASPROWICZA * KOŁOBRZEG ***

37,3 m²



1	salon z aneksem kuchennym	21,5 m ²
2	łazienka	3,8 m ²
3	pokój	12 m ²

4	balkon	8,6 m ²
---	--------	--------------------



APARTAMENTY KASPROWICZA * KOŁOBRZEG * UL. KASPROWICZA 20A

www.puh-akces.pl * akces@puh-akces.pl * tel. 693-213-211 * ul. Jagiellońska 22C/14U * 78-100 Kołobrzeg